



## Summer 2015 Newsletter

### Mayor's Message—Lee Kilbourn

Summer, the season for road construction is here and we're right in the middle. MDOT decided to replace the 9 Mile overpass this year with a safer one. The approaches will be longer and not as steep so you will be able to see traffic better when you start to go over them. The project is expected to be completed in October. The Bay County Road Commission is also working on Garfield Road. They are upgrading it and turning it into a three lane road. The long term goal is to improve the road all the way to MBS Airport. The City is installing new sidewalks for the residents on Garfield along with the new road.

The pond project is going well. It is being drained so that it can be dug deeper to allow for a better environment for fish to live and to increase the pond's life. You can see just how shallow it was. The pond is a great asset to our park and with the help of a grant we received we are able to make it better for all those that enjoy and use the park. The handicapped fishing platforms are being upgraded.

The search for a new city administrator is going well. We have a good number of applications for the position and we look forward to start interviewing. The City Administrator wears many different hats. I have learned this first hand by filling in during this time. The Administrator works with the mayor and city commission to help set the tone for the whole city. From setting the budget, to being the zoning administrator, representing the city at various regional meetings, to just keeping the city employees on track doing the day to day activities that the residents expect every day from their local government. It's an important position and the City Commission will work hard to find the right person for the job. Thank you for being patient if some things at city hall have taken a bit longer.

Auburn is a great place to raise a family. That comes from the families that live here, our faith, the friendships we have, the shared values and dedicated volunteers that have built up Auburn both in the past and continue to contribute to Auburn today. To those, we say "thank you."

Summer is a great time to be outdoors. Please take time out of your busy schedule to enjoy it with both friends and family. So take a bike ride, grill out with neighbors, or just enjoy many of our great sunsets and count your blessings.

## Just a Reminder

Every summer the City sends out Ordinance Violation letters. Here are the Top 5 ways to avoid receiving a letter.

- #5: Outdoor Vehicles must be "operable"; that means licensed, insured and able to drive on the street.
- #4: Blight in Yards; Blight, the accumulation of trash, rubbish, junk, building materials, abandoned vehicles and the maintenance of blighted structures that results in a deteriorated looking neighborhood. Please keep your yards clean and buildings in repair.
- #3: Outdoor fires; Outdoor fires are only permitted in above ground patio burning units. The burning of trash, garbage, or leaves on the ground is not permitted.
- #2: While it is not an ordinance violation, when walking your dog, please remember to be courteous to pick up after your pet. Please carry a bag to pick up your pet's waste and a big thank you to the residents that are all ready being responsible.
- #1: Grass & Weeds; noxious weeds, rank vegetation or letting your grass get too long nor any accumulation of dead grass, weeds or brush are not allowed in the City. So please be kind to your neighbors and keep your grass cut and your weeds to a minimum. Cleaning the grass & weeds out of the sidewalk cracks & spaces will help keep Auburn looking beautiful too!



## Garage/Yard Sale Signs

Garage/Yard sale signs should NOT be placed in the City's right-of-way. So please keep them out of the out lawns and off of both telephone & light poles. If so placed they are subject to removal by the City. Thank you.

# Department of Public Works

## Private Trees and Shrubs Encroaching onto Public Works

For the safety of those who use the City's streets and sidewalks, trees, shrubs and bushes which overhang or are adjacent to sidewalks and streets must be trimmed.

Tree branches overhanging the sidewalk need to be trimmed to a height of at least eight feet above the sidewalk. Trees, shrubs and other vegetation should be kept trimmed at least 12 inches back from the edge of the sidewalk.

## Curbside Branch Pick-Up Program

**Public Works crews will accept:**

- Tree branches no larger than 3 inches in diameter or 14 feet in length. Any Y branches within 3 feet of the end of branch must be cut off;
- Shrub trimmings and similar brush.

**Crews will NOT accept:**

- Tree trunks, stumps or root balls
- Firewood
- Railroad ties or landscape timbers
- Grass clippings, leaves, sod, plants or yard waste
- Brush resulting from a contracted service.

Crews will continue to pick up brush until the last Tuesday in November.

Please remember to face cut ends the same way traffic flows. Brush that can be tied and bundled according to the trash company's guidelines should be set to the curb on trash day.

Free wood chips can be delivered the day of chipping, please call City Hall.

## Mosquitoes

**Help reduce the number of mosquitoes in areas outdoors where you work or play by draining sources of standing water. In this way, you reduce the number of places mosquitoes can lay their eggs and breed.**

- At least once or twice a week, empty water from flowerpots, pet food & water dishes, birdbaths, swimming pool covers, bucket, barrels, and cans.
- Check for clogged rain gutters and clean them out.
- Remove discarded tires, and other items that could collect water.
- Be sure to check for containers or trash in places that may be hard to see, such as under bushes or under your home.

## Grass Clippings

Now that the grass mowing season is upon us—please remember to keep all grass clippings off the streets. Grass clippings eventually reach the street drain system and will prevent City drains from working properly.

## Regulations for Abandoned and Dismantled Vehicles

Abandoned vehicles are vehicles left unattended on public or private property and which do not have a valid license. Dismantled vehicles are vehicles which have been partly dismantled and are missing parts.

Neither abandoned nor dismantled vehicles or related parts may remain on residential property, nor may they be stored or placed in the front yard of any property at any time.

**Vehicles may be stored in a wholly enclosed garage.**

## Signs

The City code prohibits the placement of signs in the public right-of-way, which includes the sidewalk and the out lawn area between the sidewalk and the curb.

## Pets in City Park

Please remember that if you choose to bring your pet to the City Park, it must be restrained on a six foot leash at all times. Additionally, pet owners are responsible for “cleaning up” after their pets.

**Pets are not allowed from the building west to Auburn Road.**

## Before You Dig!

Just a reminder, if you are planning to dig or excavate, state law requires you notify MISS DIG of your intent to work, and contact them at least three working days in advance. One easy call gets free staking of underground utilities and helps reduce the chance of injury and expense.

To notify MISS DIG of your intent to dig:

Call—811

Visit—[www.missdig.com](http://www.missdig.com)

## 2014 Annual Drinking Water Quality Report (Consumer Confidence Report)

This report covers the drinking water quality for City of Auburn for the calendar year 2014. This information is a snapshot of the quality of the water that was provided to you in 2014. Included are details about where your water comes from and what it contains.

### Source Water Information

The City of Auburn receives its water from the City of Midland. Midland has received its source water supply from Lake Huron since 1948. The source water pumping system is jointly owned and operated by the cities of Midland and Saginaw and is called the Saginaw-Midland Municipal Water Supply Corporation (SMMWSC). Water is drawn into the system through two intake structures located in Lake Huron off the shores of Whitestone Point. The water is chlorinated at the lake intake structures to remove harmful bacteria and zebra mussels and is then pumped through 65 miles of pipeline to Midland. The water treatment complex is able to provide 48 million gallons per day (MGD) of treated Lake Huron water to the communities. The water treatment plant is staffed by state-certified water treatment operators, water analysts and maintenance personnel that monitor, test, maintain and adjust the treatment process to provide high quality and reliable water service.

In June 2004, the Michigan Department of Environmental Quality (MDEQ) released a Source Water Assessment Report (SWAR) for our community's source of raw water. Included in the Source Water Assessment is a susceptibility analysis of our raw water. Susceptibility is a measure of the factors within the source water area that may pose a risk to the water supply. The Source Water Assessment Report concluded that potential contaminant sources present a negligible risk due to the physical location of the intakes. Based on the intake's infrequent experience with abnormal current flows, the Saginaw-Midland source water is defined as moderately low for susceptibility to potential contamination. Midland has effectively treated this source to meet drinking water standards.

A copy of the Source Water Assessment is available for review at City Hall. If you have any questions or need additional information on the report, please call the Midland Water Plant at 989-837-3515.

### Information on Lead and Copper

If present, elevated levels of lead can cause serious health problems, especially for pregnant women and young children. Lead in drinking water is primarily from materials and components associated with service lines and home plumbing. The City of Auburn is responsible for providing high quality drinking water, but cannot control the variety of materials used in plumbing components. When your water has been sitting for several hours, you can minimize the potential for lead exposure by flushing your tap for 30 seconds to 2 minutes before using water for drinking or cooking. If you are concerned about lead in your water, you may wish to have your water tested. Information on lead in drinking water, testing methods and steps you can take to minimize exposure is available from the Safe Drinking Water Hotline 1-800-426-4791 or at [www.epa.gov/drink/](http://www.epa.gov/drink/).

Copper is an essential nutrient, but some people who drink water containing copper in excess of the action level over a relatively short amount of time could experience gastrointestinal distress. Some people who drink water containing copper in excess of the action level over many years could suffer liver or kidney damage. People with Wilson's Disease should contact their physician. If you are concerned about elevated cop-

per levels in your home's water, you may wish to have the water tested, and flush your tap for 30 seconds to 2 minutes before using the water.

Contact the City's DPW at 662-6761 for further information on water testing.

### Special Information Available

Some people may be more vulnerable to contaminants in drinking water than the general population. Immuno-compromised persons—such as persons with cancer undergoing chemotherapy, persons who have undergone organ transplants, people with HIV/Aids or other immune system disorders, some elderly and infants—can be particularly at risk from infections.

These people should seek advice about drinking water from their healthcare providers. Environmental Agency (EPA) and Centers for Disease Control (CDC) guidelines on appropriate means to lessen the risk of infection by Cryptosporidium and other microbial contaminants are available from the EPA's safe Drinking Water Hotline (800-426-4791) or [www.epa.gov/drink/](http://www.epa.gov/drink/).

### Health and Safety Information

Drinking water, including bottled water, may reasonably be expected to contain at least small amounts of some contaminants. The presence of contaminants does not necessarily indicate that water poses a health risk.

More information about contaminants and potential health effects can be obtained by calling the Environmental Protection Agency's Safe Drinking Water Hotline (800-426-4791) or [www.epa.gov/drink/](http://www.epa.gov/drink/).

### **Contaminants that may be present in source water include:**

- Microbial contaminants, such as viruses and bacteria, which may come from sewage treatment plants, septic systems, agricultural livestock operations, and wildlife.
- Inorganic contaminants such as salts and metals, which can be naturally occurring or result from urban storm water runoff, industrial or domestic wastewater discharges, oil and gas production, mining or farming.
- Pesticides and herbicides, which; may come from a variety of sources such as agriculture, urban storm water runoff, and residential uses.
- Organic chemical contaminants which can be naturally occurring or be the result of oil and gas production and mining activities.

In order to ensure that tap water is safe to drink, the Environmental Protection Agency prescribes regulations, which limit the amount of certain contaminants in water provided by public water systems.

The Food and Drug Administration (FDA) regulation establish limits for contaminants in bottled water, which must provide the same protection for public health.

# The City of Auburn 2014 Water Quality Report

## SUBSTANCES REGULATED AT MIDLAND'S WATER TREATMENT PLANT

Substance	Units	Range	Average	MCL	MCLG	Likely Source	Violation ?
Fluoride	ppm	0.32-0.84	0.69	4	4	Erosion of natural deposits; Water Treatment additive which promotes strong teeth.	NO
Turbidity	ntu	.001-.22	n/a	TT (a)	n/a	Soil Runoff; suspended matter in surface water	NO
Barium (b)	ppm	0.01	0.01	2	2	Discharge of drilling wastes; discharge from metal refineries; erosion of natural deposits	NO
Selenium	ppb	2	2	50	50	Discharge from petroleum refineries; erosion of natural deposits; discharge from mines	NO

(a). Turbidity is monitored because it is a good indicator of the effectiveness of the filtration system. The treatment technique for turbidity requires that all samples be below 1 ntu, and at least 95% of the samples each month be lower than 0.3 ntu. 100% of the samples were below 0.3 ntu.

(b). Testing for this substance conducted every nine years. Test date 2014.

## SUBSTANCES REGULATED IN THE DISTRIBUTION SYSTEM

Substance	Units	Range	Highest RAA (c)	MCL		Likely Source	Violation ?
Total Trihalomethanes	ppb	22-64	47	80		By-products of drinking water chlorination	NO
Total Haloacetic Acids	ppb	14-25	26	60		By-products of drinking water chlorination	NO
Chlorine	ppm	0.66-1.38	.095	<u>MRDL</u> 4.0	<u>MRDLG</u> 4.0	Water Treatment additive for control of microbial contaminants	NO

(a). Turbidity is monitored because it is a good indicator of the effectiveness of the filtration system. The treatment technique for turbidity requires that all samples be below 1 ntu, and at least 95% of the samples each month be lower than 0.3 ntu. 100% of or samples were below 0.3 ntu.

(b). Testing for this substance conducted every nine years. Test date 2004.

## SUBSTANCES REGULATED AT THE CUSTOMER'S TAP (CITY OF AUBURN)

Substance	Units	90th Percentile	MCL	MCLG		Likely Source	Violation ?
Copper (d) (f)	ppm	0.270	AL=1.3	1.3		Corrosion of household plumbing system	NO
Lead (e) (f)	ppb	3	AL=15	0		Corrosion of household plumbing system	NO

d. No testing site exceeded the Copper Action Level of 1.300 ppm.

e. No testing sites exceeded the Lead Action Level of 15 ppb.

f. Testing for this substance conducted every three years. Test date 2014.

## UNREGULATED (SINGLE SAMPLE AT WATER TREATMENT PLANT)

Substance	Units	Amount Detected	Likely Source	Violation ?
Sodium	ppm	5	Erosion of natural deposits	NO

## UNREGULATED PARAMETERS

Substance	Units	Amount Detected				Likely Source	Violation ?
Sodium	ppm	5				Erosion of natural deposits	NO
		At Water Plant		At end of system			
		Range	Average	Range	Average		
Chromium	ppm	0.56-0.30	0.43	0.44-0.48	0.46		NO
Strontium	ppm	97-81	89	110-120	115		NO
Hexavalent chromium	ppb	0.50-0.29	0.395	0.45-0.36	0.405		NO

## DEFINITION OF TERMS USED

The following water treatment terms and definitions are listed to assist with interpreting the Water Quality Report for those who are unfamiliar with water treatment terminology.

**AL—Action Level:** The concentration of a contaminant which, if exceeded, triggers the need for additional treatment or other requirements which a water system must meet.

**Highest RAA—Highest Running Annual Average:** Calculated quarterly.

**MCL—Maximum Contaminant Level:** The highest level of a contaminant, which is allowed in drinking water. MCLs are set as close to the MCLGs as feasible using the best available treatment technology.

**MCLG—Maximum Contaminant Level Goal:** The level of contaminant in drinking water below which there is no known or expected risk to health. MCLGs allow for a margin of safety.

**MRDL—Maximum Residual Disinfectant Level:** The highest level of a disinfectant allowed in drinking water. There is convincing evidence that addition of a disinfectant is necessary for control of microbial contaminants.

**MRDLG—Maximum Residual Disinfectant Level Goal:** The level of a drinking water disinfectant below which there is no known or expected risk to health. MRDLGs do not reflect the benefits of the use of disinfectants to control microbial contamination.

**ntu—Nephelometric Turbidity Units:** Is a measure of the clarity of water. The lower the numbers, the more clear the water.

**n/a:** Not applicable

## Auburn Water Rates

The Auburn City Commission does an annual review of both the costs of water and sewer before each new budget year. The primary causes for an increase is a change in the cost of wholesale water cost from the City of and Midland, capital improvements in the water fund and increases for capital improvements at the Bay County Sewer Plant in the Sewer Fund. Additionally, the city's water and sewer rates support the operations of maintenance of the city's water and sewer systems, including labor, replacement and improvements to the systems. There is no planned increase in water or sewer rates for the 2015-2016 budget year.

		Minimum Qrtly Charge	Usage Gallons	Usage Gallons	Usage Gallons	Usage Gallons
Water Rates	Rate/1,000 Gal	5,000	12,000	14,000	16,000	18,000
Current	\$4.36	\$21.80	\$52.32	\$61.04	\$69.76	\$78.48
Proposed	\$4.49	\$22.45	\$53.88	\$62.86	\$71.84	\$80.82
Sewer Rates	Rate/1,000 Gal	10,000	12,000	14,000	16,000	18,000
Current	\$5.29	\$52.90	\$63.48	\$74.06	\$84.64	\$95.22
Proposed	\$5.45	\$54.50	\$65.40	\$76.30	\$87.20	\$98.10
Inc. in Qrtly Bill	.29	\$2.25	\$3.48	\$4.06	\$4.64	\$5.22



**Fireworks**, you can fire your legally store-bought fireworks the day before, the day of and the day after the following national holidays: New Year’s Day, Martin Luther King Jr. Day, Washington’s Birthday, Memorial Day, Independence Day, Labor Day, Columbus Day, Veterans Day, Thanksgiving Day & Christmas Day. It's not allowed after 1a.m. through 8 a.m. You need prior permission to light off fireworks in parking lots, on public property or another person's property. You must be 18 years or older to buy fireworks and you can't be under the influence of drugs and/or alcohol. *Please be considerate of your neighbors when using!*



Know what's below.  
Call before you dig.

## Adding a fence, planting a tree, installing a new mailbox?

Before you Dig, Call Miss Dig. Before anyone does any type of digging, they are required

### Vacation Home Check

When you do leave your home be sure to sign up for Auburn’s Home Watch Program. A deputy will check your home regularly while you are away. An exterior check of your home will be conducted to make sure there have been no unlawful entries and that no other obvious problems have occurred outside of your home. To sign up for this free service, contact City Hall from 8:30 a.m. to 4:30 p.m. Monday to Friday or visit [auburnmi.org](http://auburnmi.org)

## Fun & Free Food Kids Night

Join us at the Auburn United Methodist Church June 22nd, July 15th & Aug 20th for fun summer activities, hot dogs & goodies.

Call 989.662.6314  
For more information

## Always Beware for Fraud & Identity Theft

Scams and frauds committed against unsuspecting people have been going on for a long time. Today, many scams are computer driven, although mail and telephone contacts are still very popular. Among the hottest types of scams currently are lottery or sweepstakes which tell you that you have won money. They ask for money up front to cover taxes or expenses. Many times they ask you to call a confirmation number. This usually is a toll call that charges several dollars per minute, charged to your telephone.

Another scam is where a person is auctioning an item, on one of the popular auction sites. A buyer responds and an agreement is made to purchase the item for a specified amount. The buyer wants to send a check that has already been made for an amount much higher than the sale price. The buyer tells the seller to cash the check, take some extra cash for the trouble, and send him a refund. That would come from the seller's own bank account, of course. The buyer sends the check, and the seller deposits it into his account. He then writes the seller a check for the balance. By the time the seller finds out the buyers check was a forgery, it is too late and the seller is out money.

There are almost endless possibilities in which to scam good, honest people out of their hard earned cash. But, as the old saying goes, if it is too good to be true...it probably is.

If you have been a victim of identity theft, you should check your credit or put a watch on your credit activity through the three major credit reporting agencies, **Equifax**, **Experian**, and **Trans Union**.

If you have any questions you can call the Auburn Police Department at (989) 662-6768.

**Auburn Cornfest July 9-12  
It's a Fiesta!**

Family Entertainment  
Concert by *Unspoken*  
July 8, 6 p.m. Cornfest tent  
Tickets at Auburn City Hall, Artisans Landscaping,  
Ray Garcia 662-6050 and at door  
Concessions, bring lawn chair

Cornstalk 5K Run/Walk  
Thursday, July 9, 6:30 p.m.  
Western High School  
www.barc-mi.com

Fireworks July 9 at Dusk

Thursday: Craft Beer Sampling  
Friday: Human Foosball Tournament  
Saturday: Car & Tractor Show  
Sunday: Trivia Tournament

45<sup>th</sup> Annual Parade July 12

For more info, contact  
**Auburnjaycees@hotmail.com**

**Auburn Shooting Range Dates**

Saturdays (10 a.m.-4 p.m.)

June 13 & 27

July 11 & 25

August 8 & 22

September 12, 19, 26

October 10, 17, 24, 31

November 7 (November hours 9 a.m.-4 p.m.)

**Grace Lutheran Summer Fellowship Events**

- Barbeque/Cornhole Tournament June 16th: 6:00 pm
- Kickball/Ice Cream Social-July 21st 6:30 pm
- Movie Night –August 11th 6:30 *Do You Believe*
- 50's Block Party—July 31st 6:00 pm

For more info: 989-415-7865 or email: kherbs@charter.net

**Pickleball**

Looking for members  
Tuesdays @ 6 p.m., Auburn Park  
For more info: Neil DeShano  
989.205.6281

**Farmers Market**

Fridays, June-September  
at Tri City Worship Center  
609 W Midland Rd  
Interested vendors may contact  
Darlene Anderson 989-492-2025  
Fran Galke 989.662.2372

**Auburn Public Library**

June 17th: 1:30-6:30pm Blood Drive

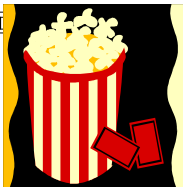
June 23rd: Free Vision Screening ages 6 months-5yrs

Children's Pottery Painting  
Registration required: July 14, 11:30 am & 1:30pm

Summer Reading Program June 15—August 15

Community Hero Friday all July, enjoy a story read and a craft ages 8 and under, 11am—11:45am

Adult Programs Call for dates and times  
Knitting & Crochet, Abstract Canvas Art, Beekeeping & more, call 662-2381



Support the Box  
Scouts Food Wagon

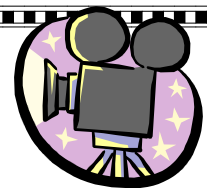
**Outdoor Movie Night at Tri-City Furniture**

Tuesday, July 14 at dusk— **BACK TO THE FUTURE**

Tuesday, July 28 at dusk — **BIG HERO 6**

Tuesday, August 18 at dusk—**HOOK**

Tuesday, August 25 at dusk—**GUARDIANS OF THE GALAXY**



Music & activities  
before each show.

---

**Summer 2015**

City of Auburn  
113 E. Elm Street  
Auburn, MI 48611

Phone: 989-662-6761  
Fax: 989-662-0240

U.S. POSTAGE  
**PAID**  
Auburn, MI  
PERMIT NO. 6

We are on the web!  
Auburnmi.org

ECRWSS

POSTAL CUSTOMER



**Auburn—Williams Lion's Club**

**4th Annual Golf Scramble**  
Saturday, June 20, 9am  
Sandy Ridge Golf Course  
For more information  
Call Karen at 989.245.4974

**Eye Ride**  
Saturday, August 29th  
Auburn City Park  
For more information  
Call Steve at 989.430.9500

**Auburn City Commission**

**Mayor**

Lee Kilbourn

**Commissioners**

Ken Charbonneau

Matt Charbonneau

Jan Dzurka

Matt Hardy

Jeff Rahl

Russell Williams

**Meeting Calendar**

City Commission meetings are held once a month on the **second** Monday at 7:00 p.m.

Downtown Development Authority  
Fourth Tuesday of the month at 10:00 a.m.

Planning Commission  
Third Tuesday of the months of Jan, Mar, May, July, Sept, Nov at 7:00 p.m.

Please Check the Website for the City calendar of all meetings and events.

[www.auburnmi.org](http://www.auburnmi.org)

**Holiday Schedule**

City Hall and DPW offices will be closed for the observance of the following holidays.

Independence Day—July 3

Labor Day—September 7

Veterans Day—November 11

Thanksgiving— November 26th & 27th

Christmas—December 24th & 25th

New Year's Eve & Day

December 31 & January 1st

Residents who need assistance with a Public Works emergency on these days should call 911 who will contact a Public Works employee or supervisor.